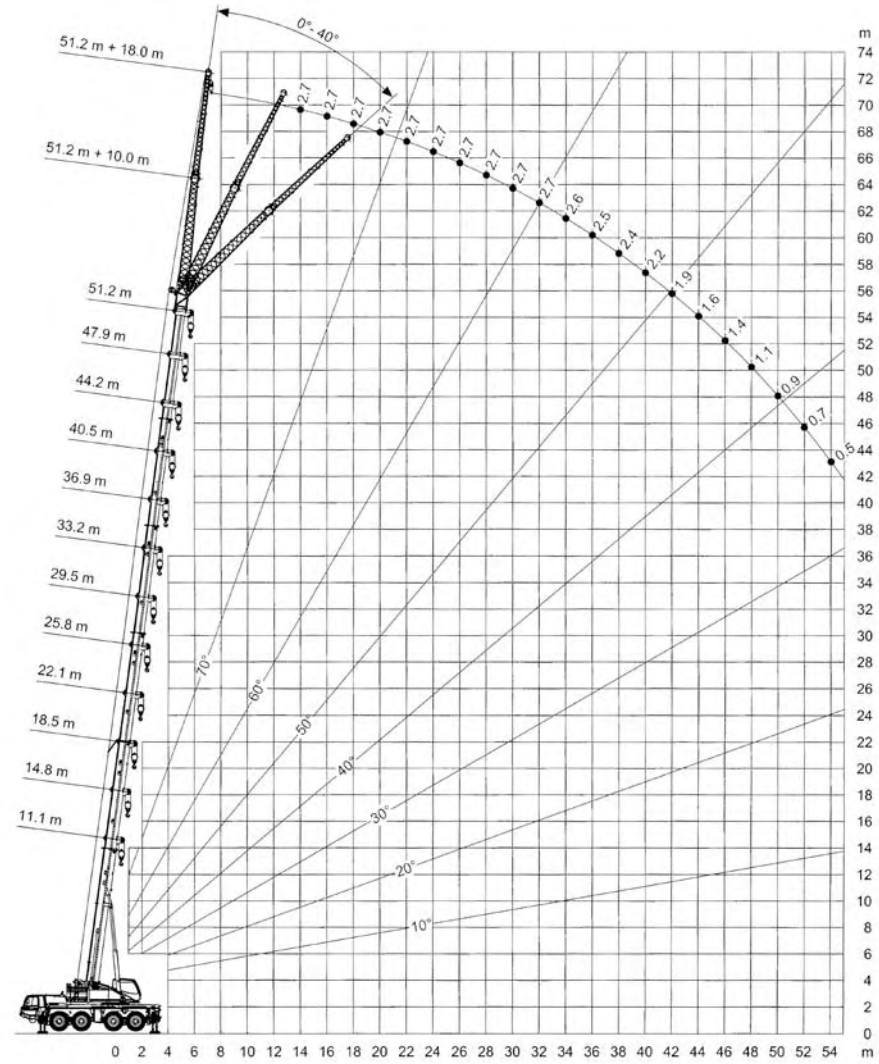


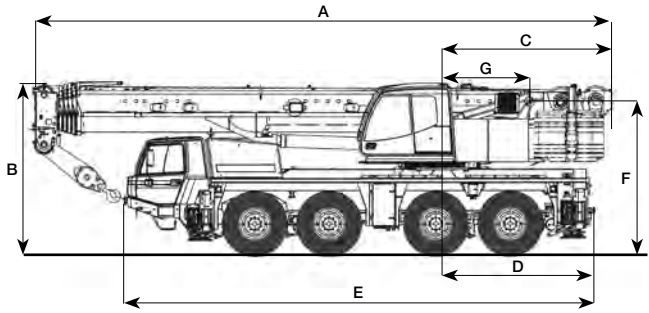
100 TONS auto/terreinkraan



met 22 ton contragewicht

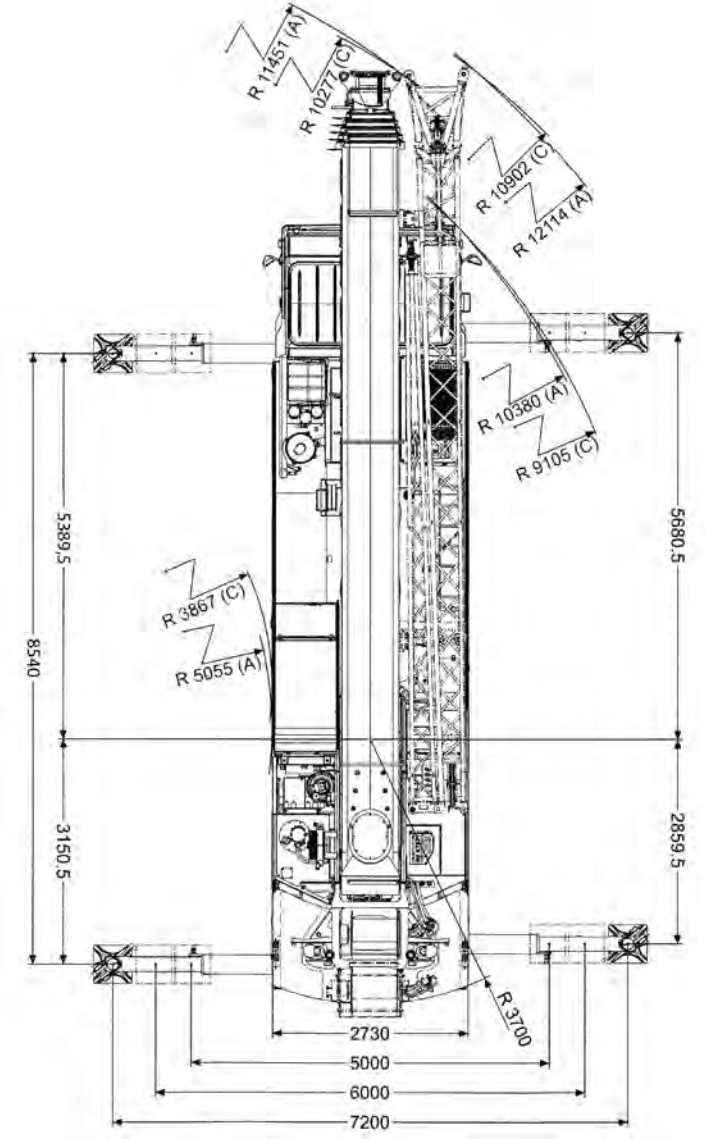


Vlucht in meters vanuit hart draaikrans



A. = 13.05 m.	breedte	: 2.73	m.
B. = 3.93 m.	gewicht	: 48	ton
C. = 3.70 m.	aandrijving	: 8 x 6 x 8	
D. = 3.50 m.	stempelbreedte	: 7.20 / 5.00	m.
E. = 10.78 m.	stempellengte	: 8.54	m.
F. = 3.46 m.			
G. = 2.00 m.			

Hoogte in meters



Hijstabel hoofdmast met 22 t. contragewicht (t.)

vlucht in meters	volledig afgestempeld / 360° zwenkbereik														vlucht in meters
	hoofdmastlengte (m.)														
5.0	11.1*	11.1	14.8	18.5	22.1	25.8	29.5	33.2	36.9	40.5	44.2	47.9	51.2	5.0	
6.0	57.8	54.6	54.2	52.3	50.0	39.2	31.6							6.0	
7.0	42.5	41.2	40.7	40.8	40.8	33.1	28.8	23.8	19.7	15.8				7.0	
8.0	36.6	35.4	35.4	35.5	35.8	31.2	28.5	23.6	19.7	15.8	12.9			8.0	
9.0	24.9	24.0	31.2	31.4	31.6	29.5	28.5	22.0	19.7	15.8	12.9	10.2		9.0	
10.0			26.5	26.7	27.1	28.0	27.2	20.6	18.5	15.8	12.9	10.2	8.9	10.0	
11.0			22.6	23.5	24.7	24.8	24.1	19.3	17.4	15.6	12.9	10.2	8.9	11.0	
12.0			20.1	21.8	21.9	21.6	21.2	18.1	16.4	14.8	12.9	10.2	8.9	12.0	
14.0				17.2	17.2	17.0	16.6	16.2	14.6	13.3	12.2	10.2	8.9	14.0	
16.0					14.0	14.0	13.8	13.4	13.8	13.0	12.0	11.1	10.2	16.0	
18.0						11.7	11.5	11.1	11.5	11.2	10.8	10.1	9.3	18.0	
20.0						9.6	9.7	9.3	9.7	9.9	9.0	9.2	8.6	20.0	
22.0							8.3	8.4	8.3	8.5	8.3	8.4	7.9	22.0	
24.0								7.8	7.1	7.5	7.4	7.3	7.0	24.0	
26.0								6.9	6.3	6.7	6.5	6.3	6.0	26.0	
28.0									5.9	5.9	5.7	5.5	5.2	28.0	
30.0									5.3	5.2	5.0	4.8	4.5	30.0	
32.0										4.7	4.4	4.2	3.9	32.0	
34.0										4.2	3.9	3.7	3.4	34.0	
36.0											3.5	3.3	3.0	36.0	
38.0											3.1	2.9	2.6	38.0	
40.0												2.6	2.2	40.0	
42.0												2.3	1.9	42.0	
44.0													1.7	44.0	
46.0														46.0	
48.0														48.0	

* over achterkant

Hijstabel hoofdmast + jib met 22 t. contragewicht (t.)

Vlucht in meters	hoofdmast + jib (m.) / volledig afgestempeld / 360° zwenkbereik														Vlucht in meters				
	33.2 m. + 10.0 m.		47.9 m. + 10.0 m.		51.2 m. + 10.0 m.		33.2 m. + 18.0 m.		47.9 m. + 18.0 m.		51.2 m. + 18.0 m.								
	0°	20°	40°	0°	20°	40°	0°	20°	40°	0°	20°	40°	0°	20°	40°				
7.0	10.1															7.0			
8.0	10.1									4.2						8.0			
9.0	10.1									4.2						9.0			
10.0	10.1	8.9								4.2						10.0			
11.0	10.1	8.6		4.9						4.2						11.0			
12.0	9.9	8.3		4.9			4.4			4.2		2.9				12.0			
14.0	9.1	7.7	6.7	4.9			4.4			4.2		2.9		2.7		14.0			
16.0	8.5	7.1	6.3	4.9	4.9		4.4	4.4		4.2	4.2	2.9		2.7		16.0			
18.0	7.9	6.7	6.0	4.9	4.8	4.5	4.4	4.4		4.2	4.1	2.9		2.7		18.0			
20.0	7.4	6.3	5.7	4.9	4.5	4.3	4.4	4.2	4.0	4.2	3.9	3.2	2.9	2.9	2.7	20.0			
22.0	6.9	6.0	5.5	4.8	4.3	4.1	4.4	4.0	3.8	4.2	3.8	3.1	2.9	2.9	2.7	22.0			
24.0	6.5	5.7	5.2	4.5	4.1	3.9	4.2	3.9	3.7	4.2	3.6	3.0	2.9	2.9	2.7	2.7	24.0		
26.0	5.7	5.5	5.1	4.3	4.0	3.8	3.9	3.7	3.5	4.2	3.5	2.9	2.9	2.9	2.8	2.7	2.6	26.0	
28.0	4.9	5.2	4.9	4.0	3.8	3.6	3.7	3.6	3.4	4.1	3.4	2.8	2.9	2.8	2.6	2.7	2.5	28.0	
30.0	4.2	4.5	4.7	3.8	3.7	3.5	3.5	3.4	3.3	3.9	3.3	2.7	2.9	2.7	2.6	2.6	2.4	30.0	
32.0	3.6	3.9	4.0	3.6	3.5	3.4	3.4	3.3	3.2	3.8	3.2	2.6	2.9	2.6	2.5	2.7	2.5	32.0	
34.0	3.1	3.3		3.3	3.4	3.3	3.2	3.1	3.1	3.6	3.1	2.6	2.8	2.5	2.4	2.6	2.4	2.3	34.0
36.0	2.7	2.9		2.8	3.1	3.2	2.8	3.0	3.0	3.2	3.0	2.5	2.7	2.4	2.3	2.5	2.3	2.2	36.0
38.0	2.3	2.4		2.4	2.6	2.8	2.4	2.6	2.8	2.8	2.9	2.5	2.6	2.4	2.2	2.4	2.2	2.1	38.0
40.0	2.0			2.1	2.3	2.4	2.0	2.2	2.4	2.4	2.7	2.5	2.3	2.3	2.2	2.2	2.2	2.0	40.0
42.0				1.8	1.9	2.0	1.7	1.9	2.0	2.1	2.4		2.0	2.2	2.1	1.9	2.1	1.9	42.0
44.0				1.5	1.6	1.7	1.4	1.6	1.7	1.8	2.0		1.7	2.0	2.1	1.6	2.0	1.9	44.0
46.0				1.2	1.3		1.1	1.3	1.4	1.6	1.7		1.4	1.8	2.0	1.4	1.7	1.6	46.0
48.0				1.0	1.1		0.9	1.1		1.4			1.2	1.5	1.7	1.1	1.4	1.4	48.0
50.0				0.8	0.9		0.7	0.8					1.0	1.2	1.4	0.9	1.2	1.1	50.0
52.0				0.6	0.6		0.5	0.6					0.8	1.0	1.1	0.7	1.0	0.9	52.0
54.0													0.6	0.8		0.5	0.7		54.0
56.0																0.6			56.0

Hijscapaciteiten gelden met de uithouders op 7,20 m. uitgeschoven en afgestempeld op stevige ondergrond met de kraan in horizontale positie. Hijscapaciteiten berekend op 75% van de tiplast en volgens DIN en ISO normen. Alle hulpstukken zoals: hijsblokken (550, 300, 150 kg), evenaarsbalken, afstandhouders, kettingen, stropen, klemmen e.d. moeten als deel van de last worden beschouwd.

Hijstabel hoofdmast met 6,5 t. contragewicht (t.)

vlucht in meters	volledig afgestempeld / 360° zwenkbereik														vlucht in meters
	hoofdmastlengte (m.)														
	11.1*	11.1	14.8	18.5	22.1	25.8	29.5	33.2	36.9	40.5	44.2	47.9	51.2		
5.0	57.8	54.6	54.2	52.3	50.0	39.2	31.6							5.0	
6.0	50.0	47.3	46.8	46.8	45.9	35.0	31.1	23.8						6.0	
7.0	42.5	41.2	40.7	40.8	40.8	33.1	28.8	23.8	19.7	15.8				7.0	
8.0	36.6	35.4	35.4	35.5	35.8	31.2	28.5	23.6	19.7	15.8	12.9			8.0	
9.0	24.9	24.0	31.2	31.4	31.6	29.5	28.5	22.0	19.7	15.8	12.9	10.2		9.0	
10.0			26.5	26.7	27.1	28.0	27.2	20.6	18.5	15.8	12.9	10.2	8.9	10.0	
11.0			22.6	23.5	24.7	24.8	24.1	19.3	17.4	15.6	12.9	10.2	8.9	11.0	
12.0			20.1	21.8	21.9	21.6	21.2	18.1	16.4	14.8	12.9	10.2	8.9	12.0	
14.0				17.2	17.2	17.0	16.6	16.2	14.6	13.3	12.2	10.2	8.9	14.0	
16.0				14.0	14.0	13.8	13.4	13.8	13.0	12.0	11.1	10.2	8.9	16.0	
18.0					11.7	11.5	11.1	11.5	11.2	10.8	10.1	9.3	8.7	18.0	
20.0					9.6	9.7	9.3	9.7	9.9	9.0	9.2	8.6	8.0	20.0	
22.0						8.3	8.4	8.3	8.5	8.3	8.4	7.9	7.4	22.0	
24.0							7.8	7.1	7.5	7.4	7.3	7.0	6.9	24.0	
26.0							6.9	6.3	6.7	6.5	6.3	6.0	6.0	26.0	
28.0								5.9	5.9	5.7	5.5	5.2	5.2	28.0	
30.0								5.3	5.2	5.0	4.8	4.5	4.5	30.0	
32.0									4.7	4.4	4.2	3.9	3.9	32.0	
34.0									4.2	3.9	3.7	3.4	3.4	34.0	
36.0										3.5	3.3	3.0	3.0	36.0	
38.0										3.1	2.9	2.6	2.6	38.0	
40.0											2.6	2.2	2.2	40.0	
42.0											2.3	1.9	1.9	42.0	
44.0												1.7	1.6	44.0	
46.0													1.4	46.0	
48.0													1.2	48.0	

* over achterkant

Hijstabel hoofdmast + jib met 6,5 t. contragewicht (t.)

Vlucht in meters	hoofdmast + jib (m.) / volledig afgestempeld / 360° zwenkbereik															Vlucht in meters			
	33.2 m. + 10.0 m.			47.9 m. + 10.0 m.			51.2 m. + 10.0 m.			33.2 m. + 18.0 m.			47.9 m. + 18.0 m.				51.2 m. + 18.0 m.		
	0°	20°	40°	0°	20°	40°	0°	20°	40°	0°	20°	40°	0°	20°	40°		0°	20°	40°
7.0	10.1																		7.0
8.0	10.1								4.2										8.0
9.0	10.1								4.2										9.0
10.0	10.1	8.9							4.2										10.0
11.0	10.1	8.6		4.9					4.2										11.0
12.0	9.9	8.3		4.9		4.4			4.2		2.9								12.0
14.0	9.0	7.7	6.7	4.9		4.4			4.2		2.9			2.7					14.0
16.0	7.1	7.1	6.3	4.9	4.9	4.4	4.4		4.2	4.2	2.9			2.7					16.0
18.0	5.5	6.2	6.0	4.9	4.8	4.5	4.4	4.4	4.2	4.1	2.9			2.7					18.0
20.0	4.3	4.9	5.4	4.6	4.5	4.3	4.4	4.2	4.0	4.2	3.9	3.2	2.9	2.9			2.7		20.0
22.0	3.4	3.9	4.3	3.6	4.2	4.1	3.6	4.0	3.8	4.0	3.8	3.1	2.9	2.9			2.7	2.7	22.0
24.0	2.7	3.1	3.4	2.8	3.3	3.7	2.8	3.3	3.7	3.3	3.6	3.0	2.9	2.9			2.7	2.7	24.0
26.0	2.0	2.4	2.7	2.2	2.7	3.0	2.2	2.6	3.0	2.6	3.4	2.9	2.5	2.9	2.8	2.4	2.7	2.6	26.0
28.0	1.5	1.9	2.1	1.7	2.1	2.4	1.6	2.0	2.4	2.1	2.7	2.8	2.0	2.7	2.6	1.9	2.6	2.5	28.0
30.0	1.1	1.4	1.6	1.3	1.6	1.9	1.2	1.6	1.8	1.6	2.2	2.7	1.5	2.2	2.6	1.4	2.1	2.4	30.0
32.0	0.7	1.0	1.1	0.9	1.2	1.4	0.8	1.1	1.4	1.3	1.8	2.2	1.1	1.7	2.2	1.1	1.7	2.2	32.0
34.0		0.6		0.5	0.8	1.0		0.8	1.0	0.9	1.4	1.7	0.8	1.3	1.8		1.3	1.7	34.0
36.0				0.5	0.7			0.7	0.6	1.0	1.3		1.0	1.4			1.0	1.4	36.0
38.0										0.7	1.0			0.7	1.1			1.0	38.0
40.0										0.6			0.8						40.0

Specificaties 100 TONS auto/terreinkraan

