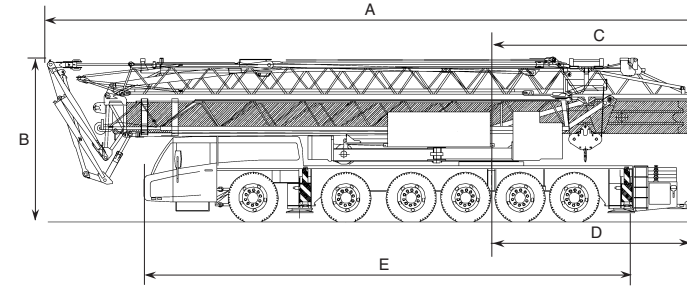
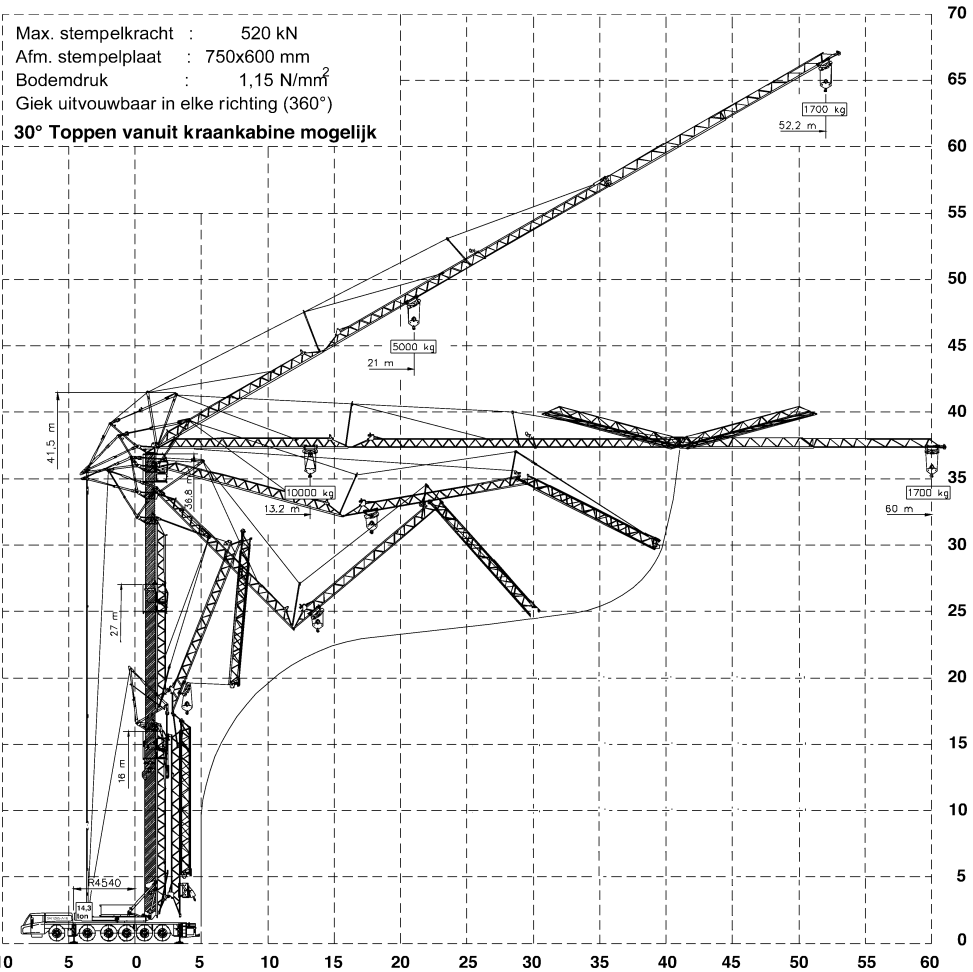


# loopkattorenkraan (132 tm)

## Spierings SK 1265-AT6 (kraan 60 m. vlucht)

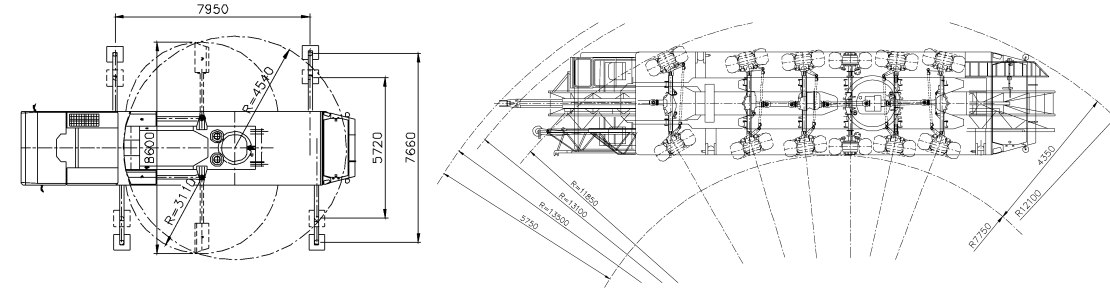


<b>Kraankengetal: 116</b>	
A = 16.27 m.	breedte : 3.00 m.
B = 4.00 m.	gewicht : 72 ton
C = 5.25 m.	aandrijving : 12 x 8 x 10
D = 4.65 m.	stempelbreedte : 7.66/5.72 m.
E = 12.10 m.	stempellengte : 7.95 m.



Hoogte in meters

Vlucht in meters vanuit hart draaikrans



HIJSTABEL Afstempeling 7,95 m x 7,66 m (max. windkracht 6)																																											
<b>Giek horizontaal</b>	<table border="1"> <tr> <td>3,5</td><td>13,2</td><td>15</td><td>20</td><td>25</td><td>30</td><td>35</td><td>40</td><td>45</td><td>50</td><td>55</td><td>60</td><td>VLUCHT (m)</td> </tr> <tr> <td>10000</td><td>9335</td><td>7985</td><td>6965</td><td>6170</td><td>5530</td><td>5000</td><td>4560</td><td>4190</td><td>3870</td><td>3590</td><td>3360</td><td>3130</td><td>2940</td><td>2770</td><td>2615</td><td>2475</td><td>2345</td><td>2230</td><td>2125</td><td>2025</td><td>1935</td><td>1850</td><td>1775</td><td>1700</td><td>LAST (kg)</td> </tr> </table>	3,5	13,2	15	20	25	30	35	40	45	50	55	60	VLUCHT (m)	10000	9335	7985	6965	6170	5530	5000	4560	4190	3870	3590	3360	3130	2940	2770	2615	2475	2345	2230	2125	2025	1935	1850	1775	1700	LAST (kg)			
3,5	13,2	15	20	25	30	35	40	45	50	55	60	VLUCHT (m)																															
10000	9335	7985	6965	6170	5530	5000	4560	4190	3870	3590	3360	3130	2940	2770	2615	2475	2345	2230	2125	2025	1935	1850	1775	1700	LAST (kg)																		
<b>Giek 30° getopt</b>	<table border="1"> <tr> <td>3,5</td><td>21</td><td>25</td><td>30</td><td>35</td><td>40</td><td>45</td><td>50</td><td>52,2</td><td>VLUCHT (m)</td> </tr> <tr> <td>5000</td><td>4740</td><td>4285</td><td>3905</td><td>3590</td><td>3305</td><td>3055</td><td>2855</td><td>2690</td><td>2550</td><td>2350</td><td>2220</td><td>2095</td><td>1985</td><td>1885</td><td>1795</td><td>1700</td><td>LAST (kg)</td> </tr> </table>	3,5	21	25	30	35	40	45	50	52,2	VLUCHT (m)	5000	4740	4285	3905	3590	3305	3055	2855	2690	2550	2350	2220	2095	1985	1885	1795	1700	LAST (kg)														
3,5	21	25	30	35	40	45	50	52,2	VLUCHT (m)																																		
5000	4740	4285	3905	3590	3305	3055	2855	2690	2550	2350	2220	2095	1985	1885	1795	1700	LAST (kg)																										
<b>HIJSTABEL Afstempeling 7,95 m x 5,72 m (max. windkracht 6)</b>																																											
<b>Giek horizontaal</b>	<table border="1"> <tr> <td>3,5</td><td>8,1</td><td>10</td><td>15</td><td>20</td><td>25</td><td>30</td><td>35</td><td>40</td><td>45</td><td>50</td><td>55</td><td>60</td><td>VLUCHT (m)</td> </tr> <tr> <td>10000</td><td>8760</td><td>6825</td><td>5560</td><td>4675</td><td>4020</td><td>3520</td><td>3120</td><td>2795</td><td>2525</td><td>2285</td><td>2105</td><td>1935</td><td>1790</td><td>1660</td><td>1550</td><td>1445</td><td>1355</td><td>1275</td><td>1200</td><td>1130</td><td>1065</td><td>1010</td><td>955</td><td>910</td><td>860</td><td>820</td><td>LAST (kg)</td> </tr> </table>	3,5	8,1	10	15	20	25	30	35	40	45	50	55	60	VLUCHT (m)	10000	8760	6825	5560	4675	4020	3520	3120	2795	2525	2285	2105	1935	1790	1660	1550	1445	1355	1275	1200	1130	1065	1010	955	910	860	820	LAST (kg)
3,5	8,1	10	15	20	25	30	35	40	45	50	55	60	VLUCHT (m)																														
10000	8760	6825	5560	4675	4020	3520	3120	2795	2525	2285	2105	1935	1790	1660	1550	1445	1355	1275	1200	1130	1065	1010	955	910	860	820	LAST (kg)																
<b>Giek 30° getopt</b>	<table border="1"> <tr> <td>3,5</td><td>12,5</td><td>15</td><td>20</td><td>25</td><td>30</td><td>35</td><td>40</td><td>45</td><td>50</td><td>52,2</td><td>VLUCHT (m)</td> </tr> <tr> <td>5000</td><td>4355</td><td>3700</td><td>3205</td><td>2815</td><td>2505</td><td>2250</td><td>2035</td><td>1855</td><td>1700</td><td>1565</td><td>1445</td><td>1340</td><td>1250</td><td>1165</td><td>1090</td><td>1025</td><td>960</td><td>905</td><td>850</td><td>800</td><td>LAST (kg)</td> </tr> </table>	3,5	12,5	15	20	25	30	35	40	45	50	52,2	VLUCHT (m)	5000	4355	3700	3205	2815	2505	2250	2035	1855	1700	1565	1445	1340	1250	1165	1090	1025	960	905	850	800	LAST (kg)								
3,5	12,5	15	20	25	30	35	40	45	50	52,2	VLUCHT (m)																																
5000	4355	3700	3205	2815	2505	2250	2035	1855	1700	1565	1445	1340	1250	1165	1090	1025	960	905	850	800	LAST (kg)																						

max. hijscapaciteit	: 132 tm	opbouwtijd	: ca. 25 minuten
max. hijslast	: 10 ton	cabinehoogte	: 27 of 37 meter
max. hijs hoogte/last	: 64.2 meter/1700 kg	overig	: camera in loopkat
max. giek lengte/last	: 60 meter/1700 kg		: verlichting in giek
zwenkbereik	: 360°		: 2e motor in bovenwagen

Hijsvermogens gelden met de uithouders op 7,66 m. of 5,72 m. uitgeschoven en afgestempeld op stevige ondergrond met de kraan in horizontale positie. Hijscapaciteiten volgens NEN 2018 en NEN 2022. Alle hulpstukken zoals: kettingen, stropen, klemmen e.d. moeten als deel van de last worden beschouwd.

Specificaties  
**Spierings SK 1265-AT6**  
**loopkattorenkraan**

